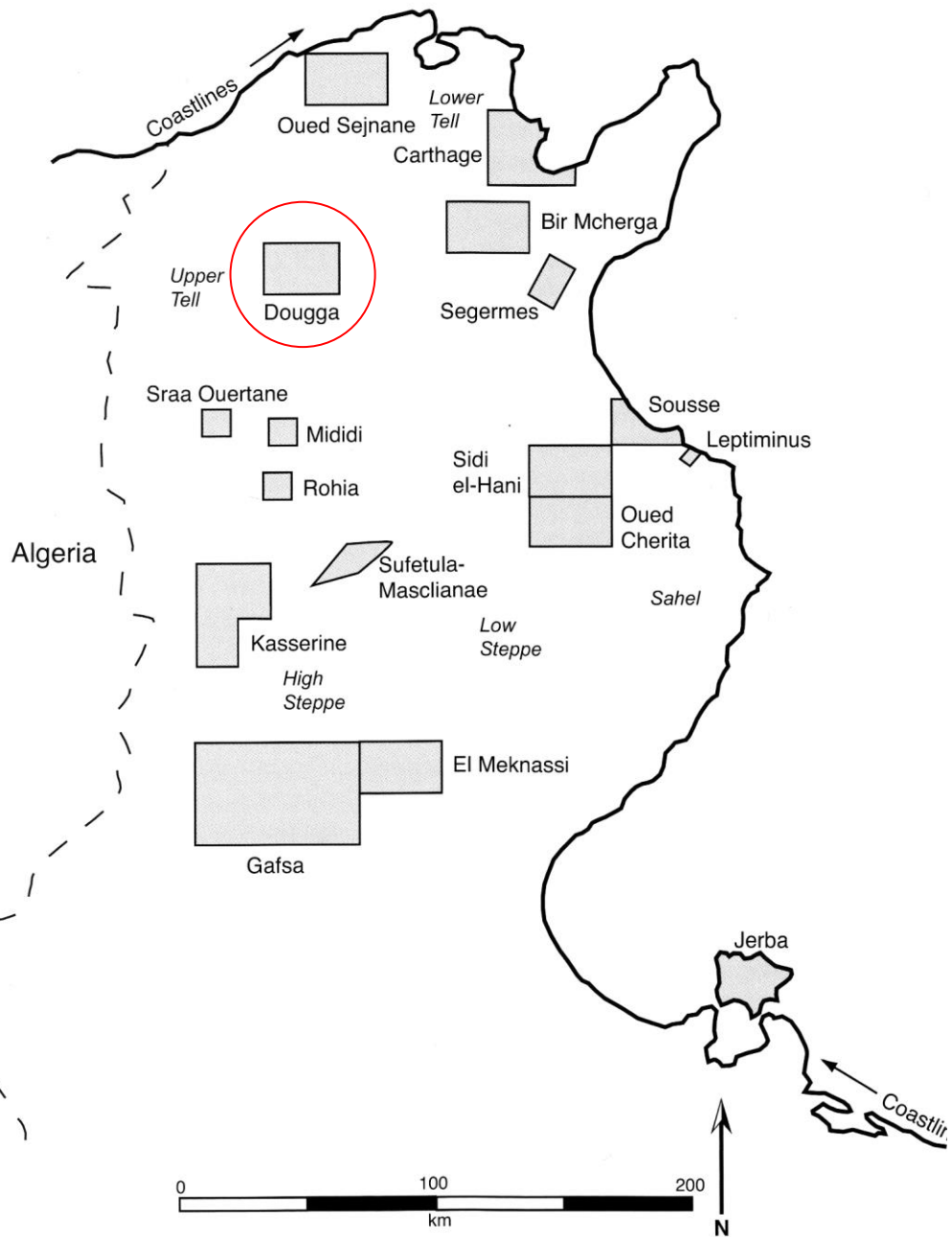


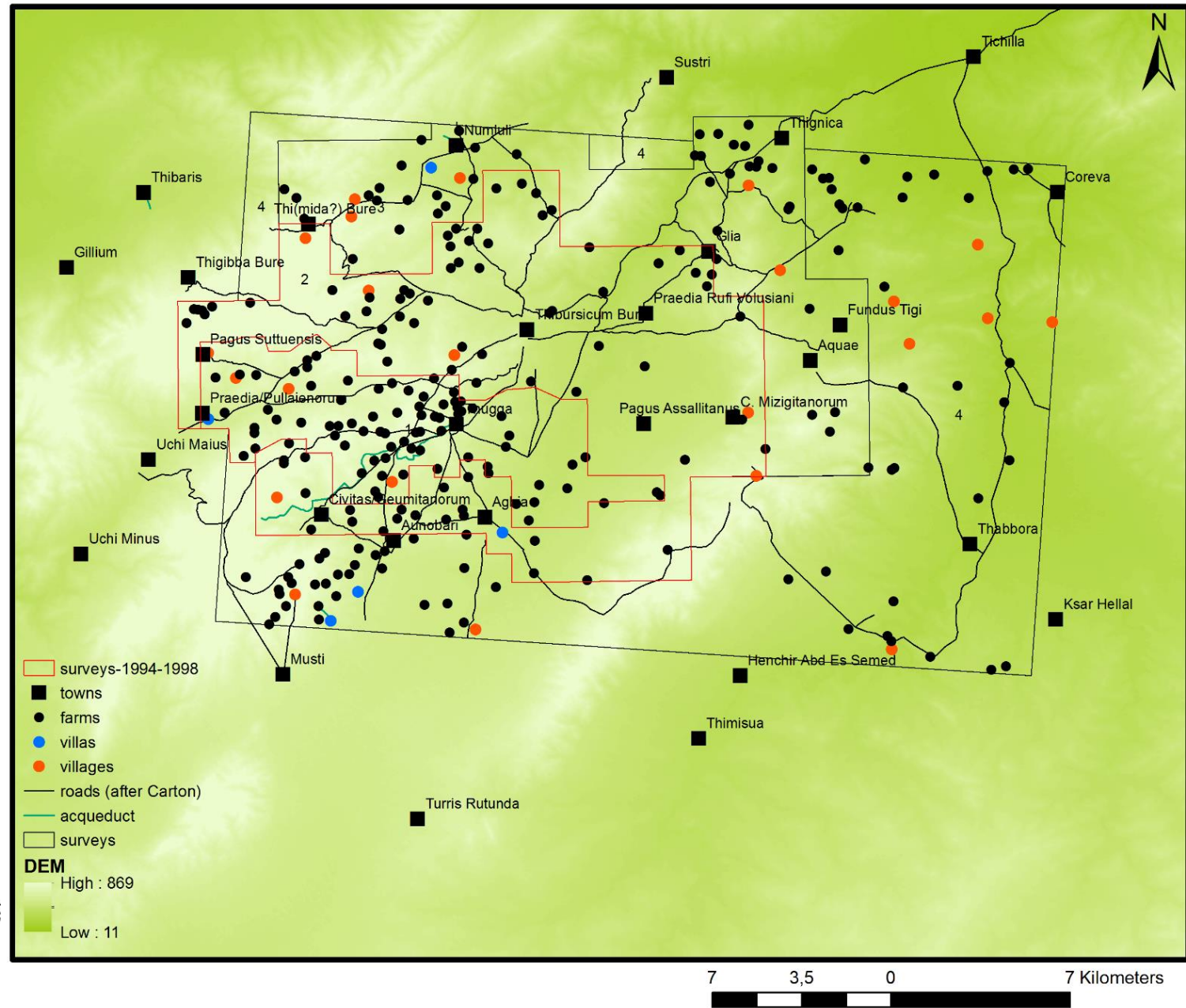
Hidden landscapes of North Africa.

Ceramic survey and rural diversity in the countryside of Dougga and Teboursouk (Tunisian High Tell)





Stone 2004



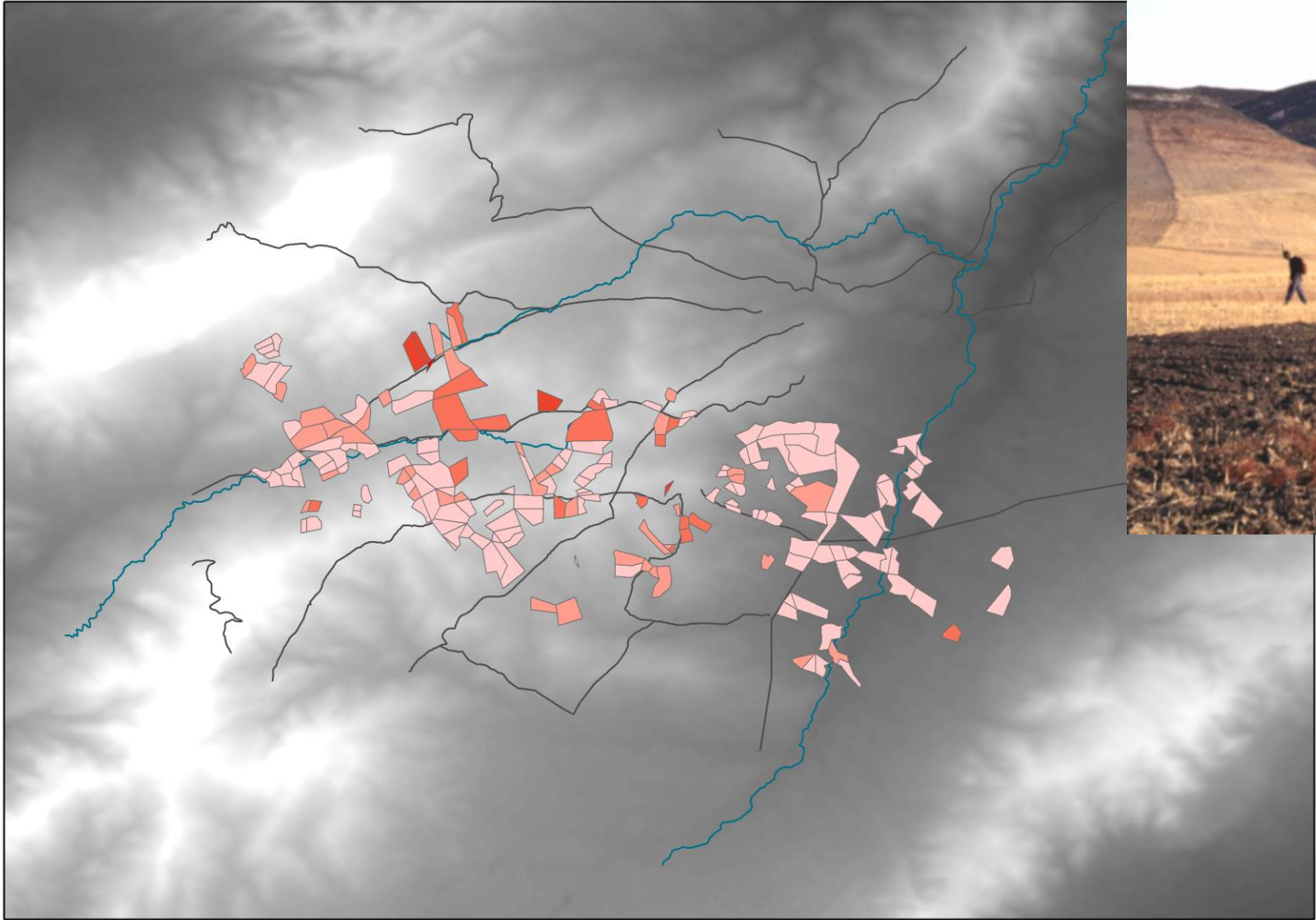


de Vos, Attoui 2012

Édifice majeur sud: fenêtre dans le mur périmétral est. Photo M. de Vos



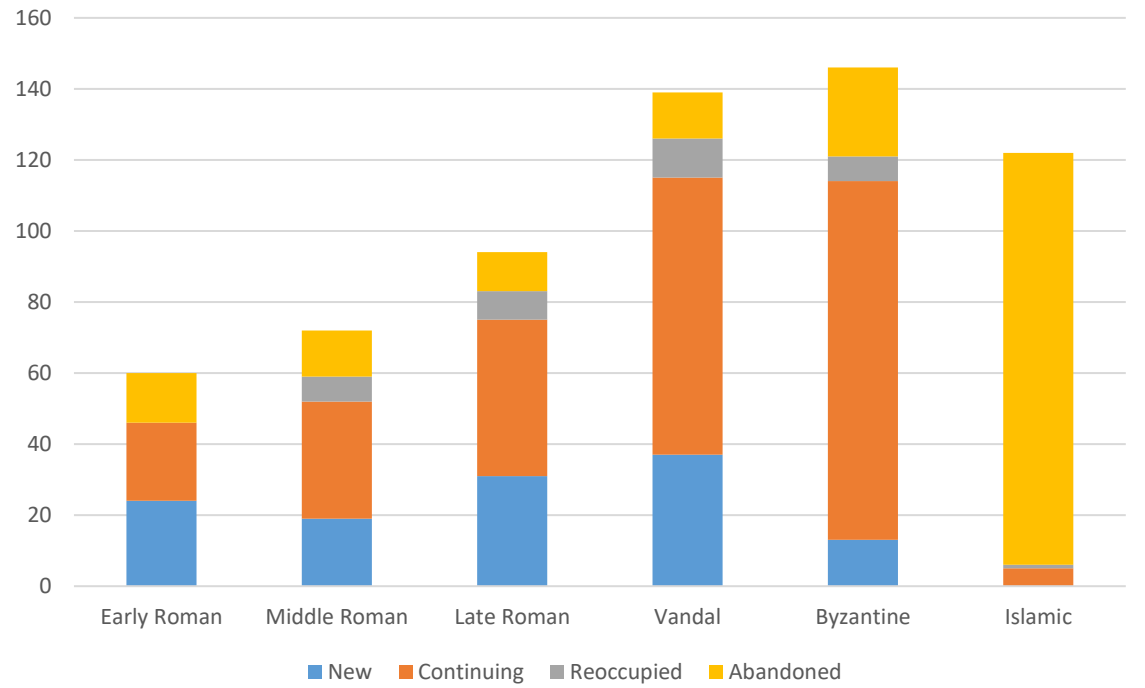
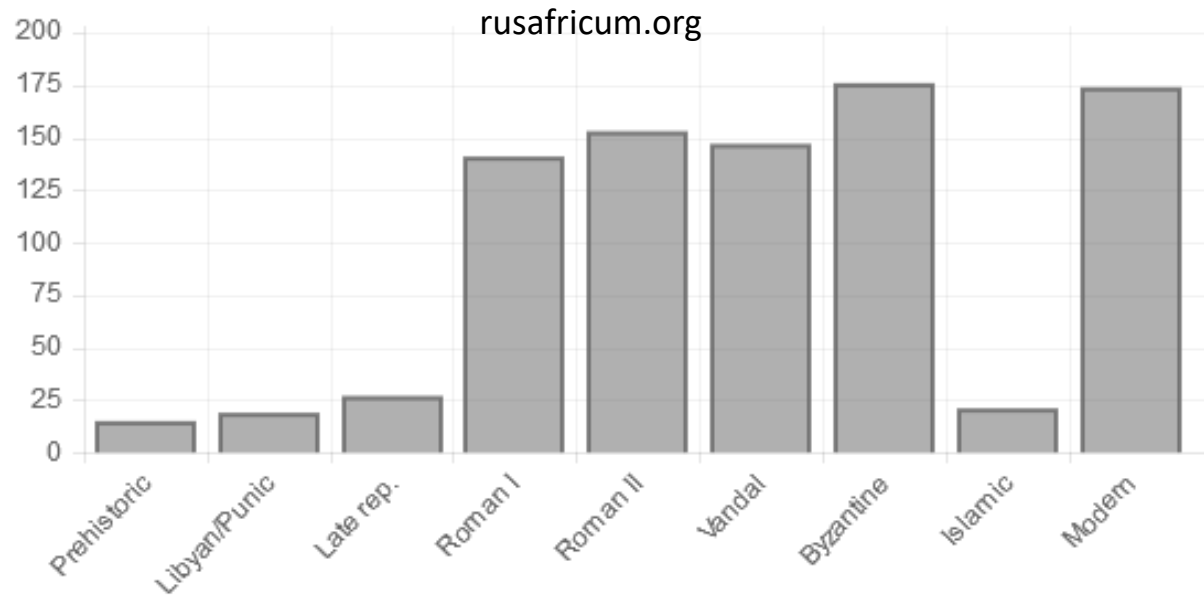
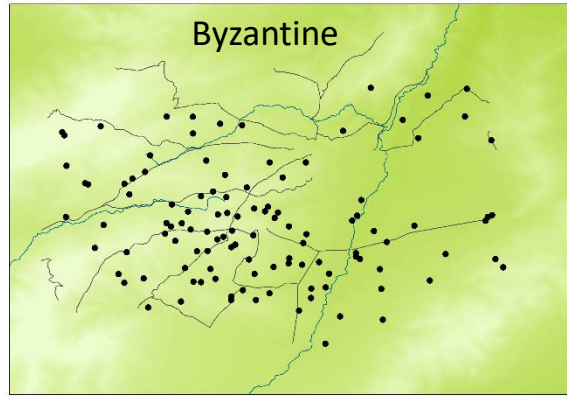
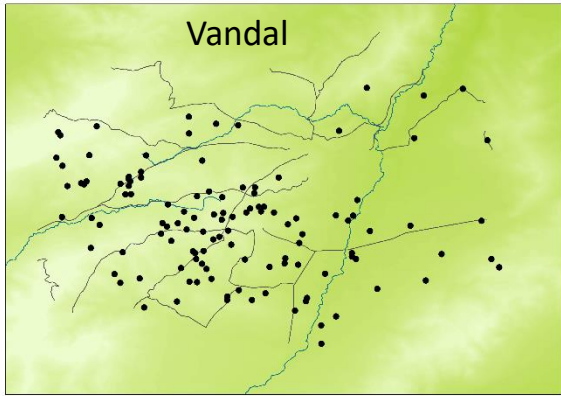
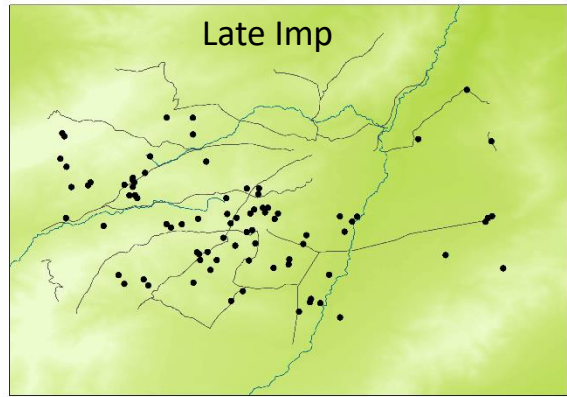
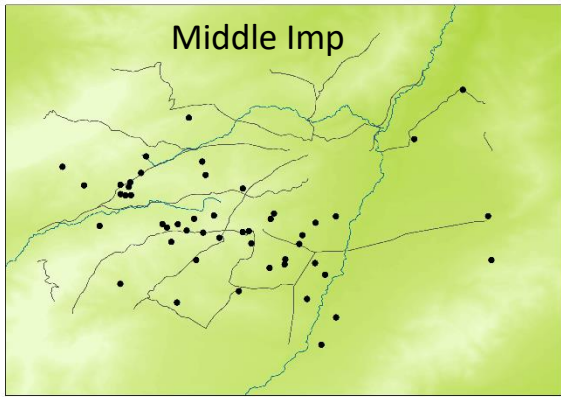
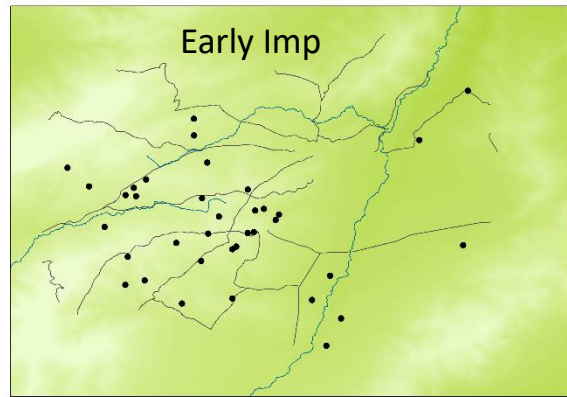
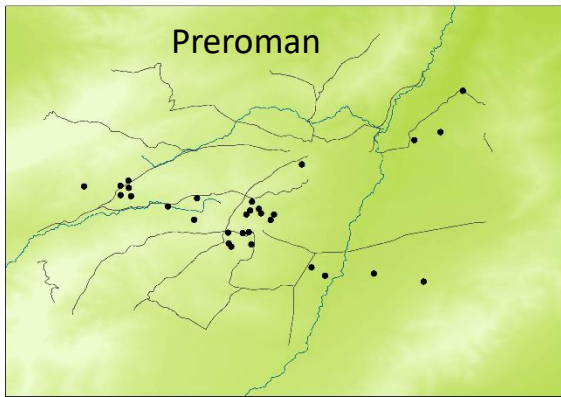
Mausolée, mur ouest intérieur. Photo M. de Vos



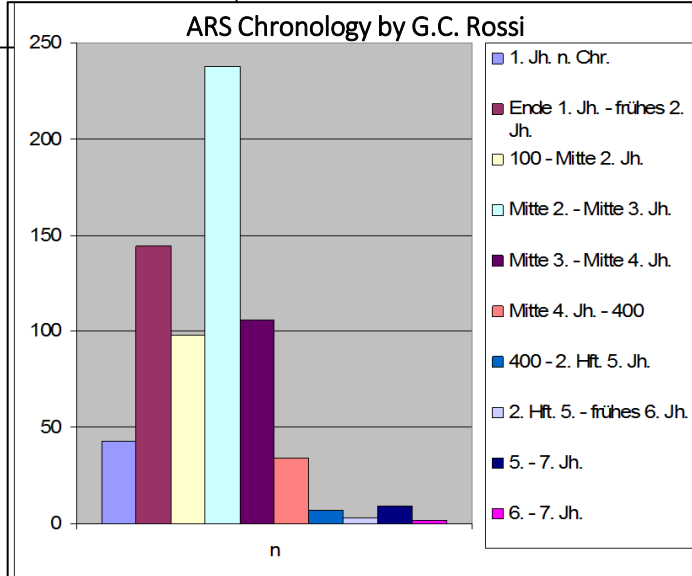
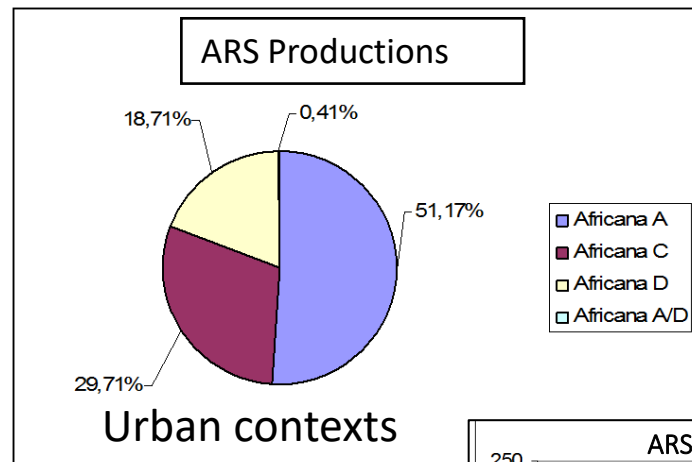
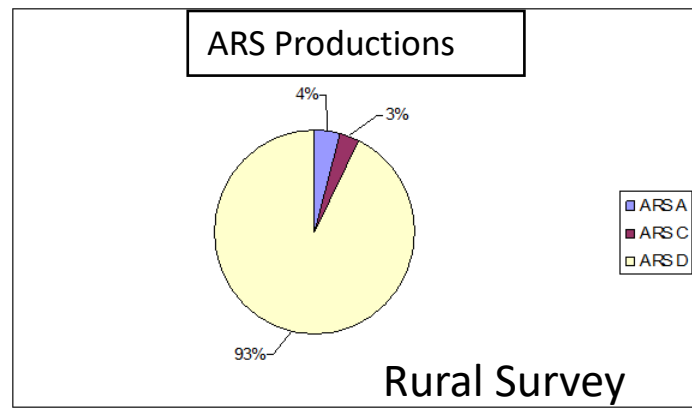
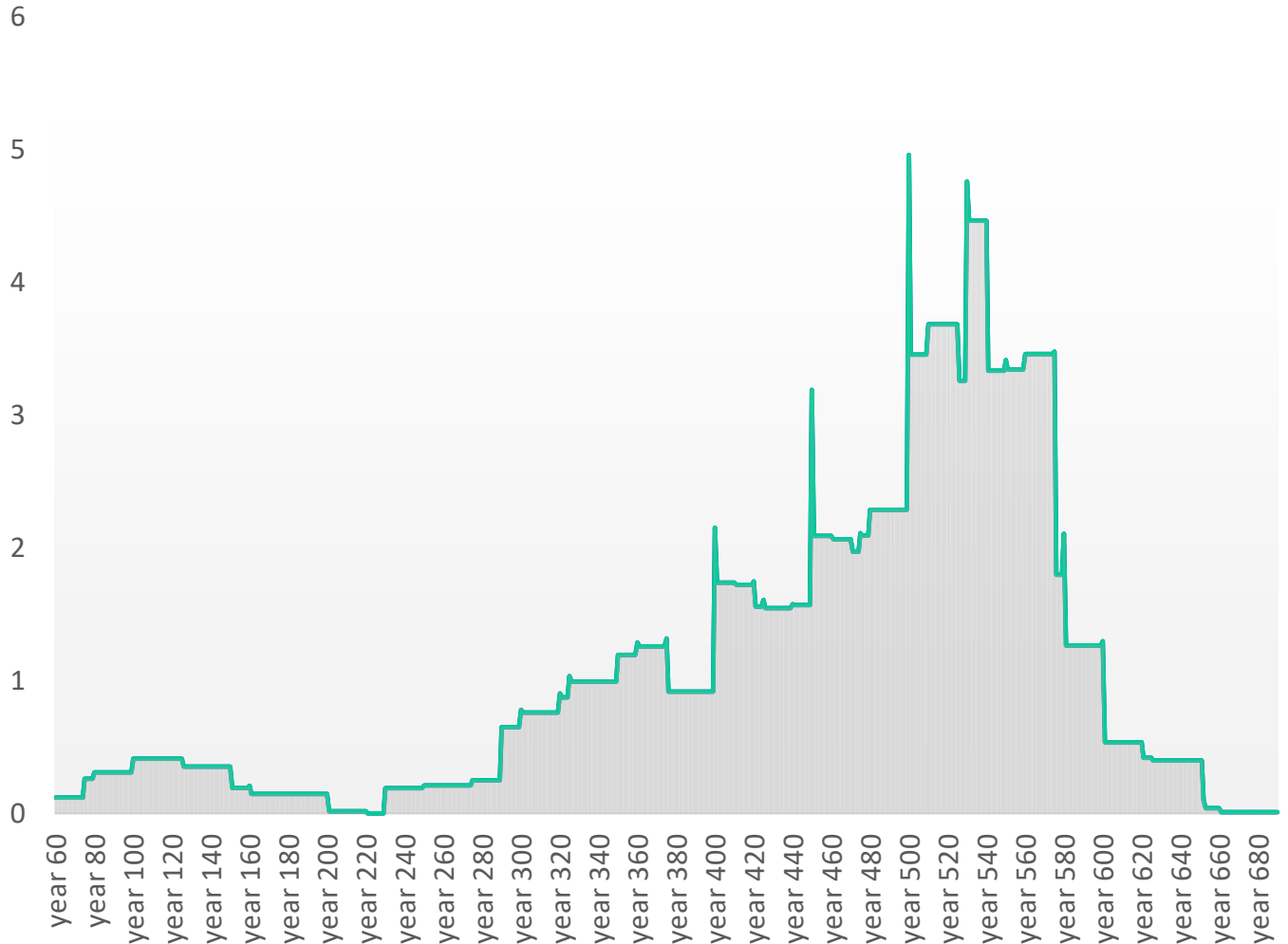
Raw number of sherds

- 1- 39
- 40- 97
- 98- 208
- 209- 390
- 391- 943
- fiumi_perenni
- Sistema stradale regionale

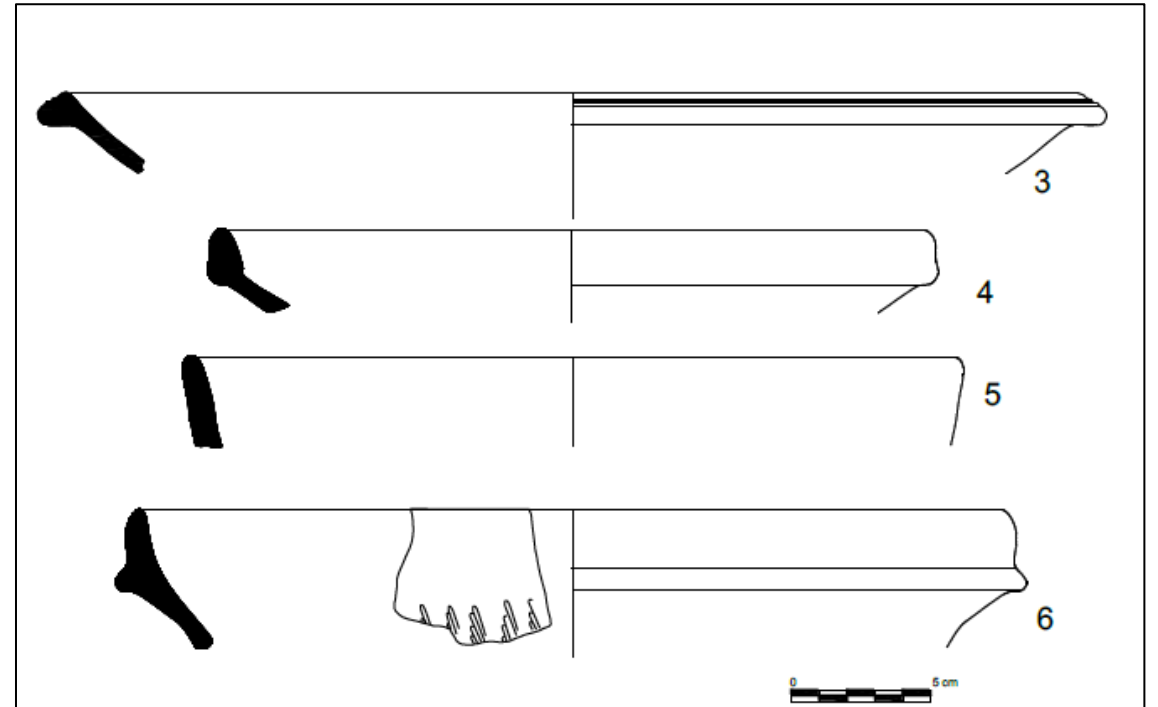
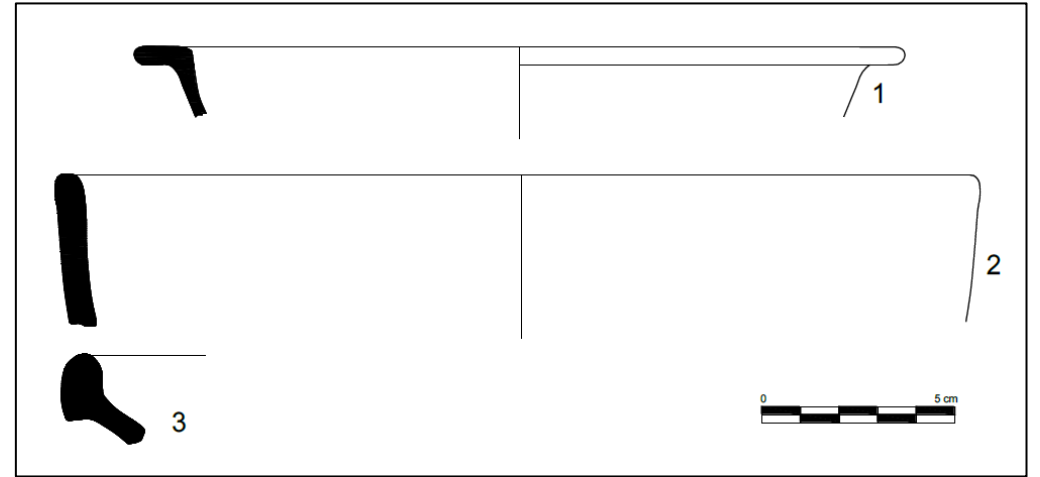
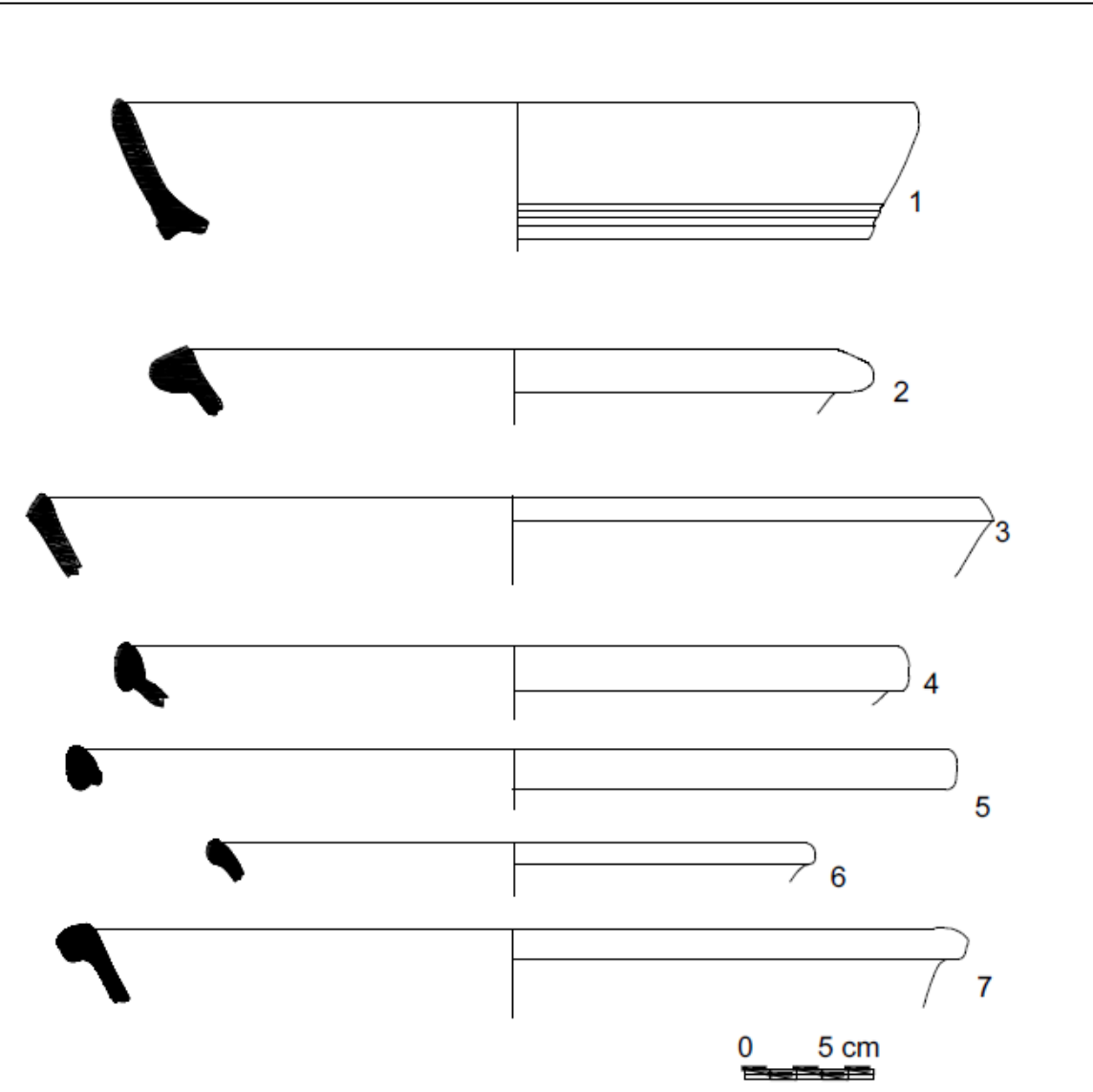




ARS-based Survey Chronology (Weighted mean/year)



ARS forms



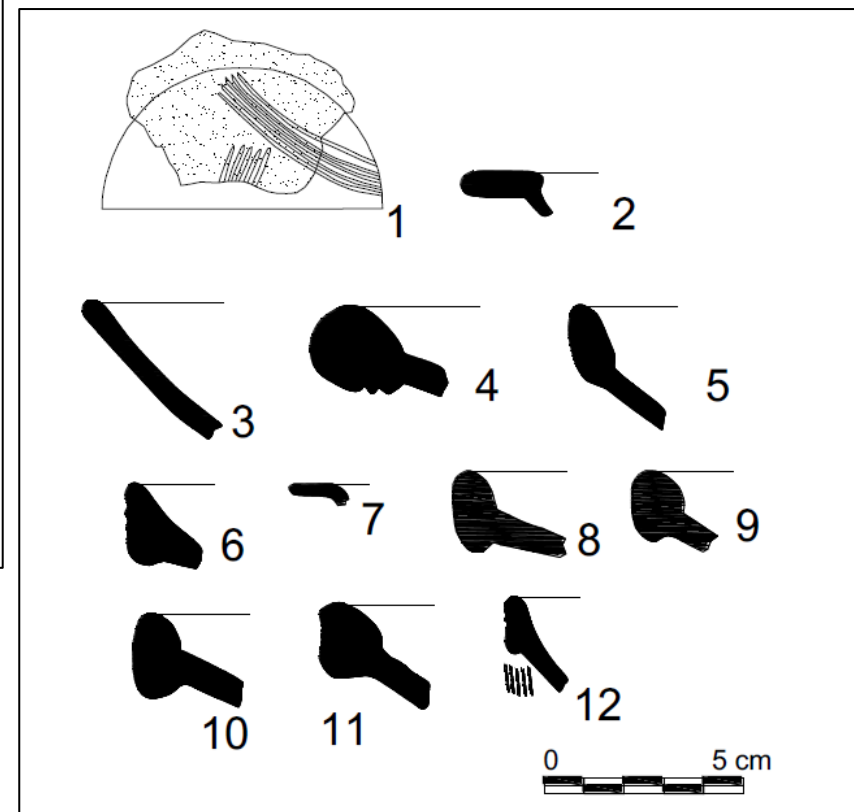
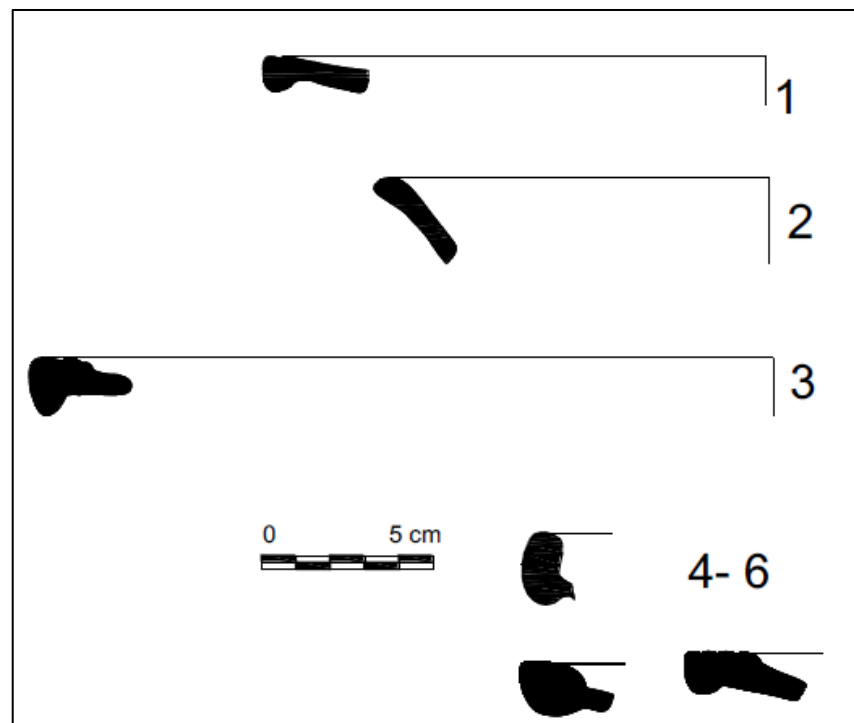
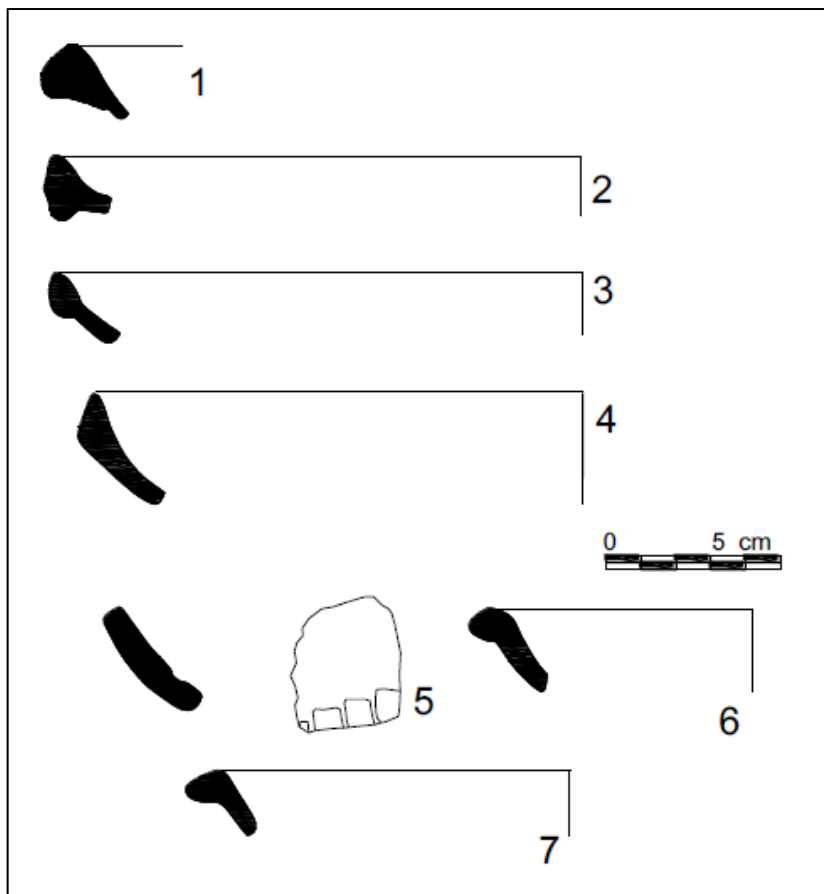


Fig. 4 B (1). Sito 147.



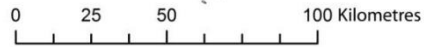
Fig. 4 B (2). Sito 388.



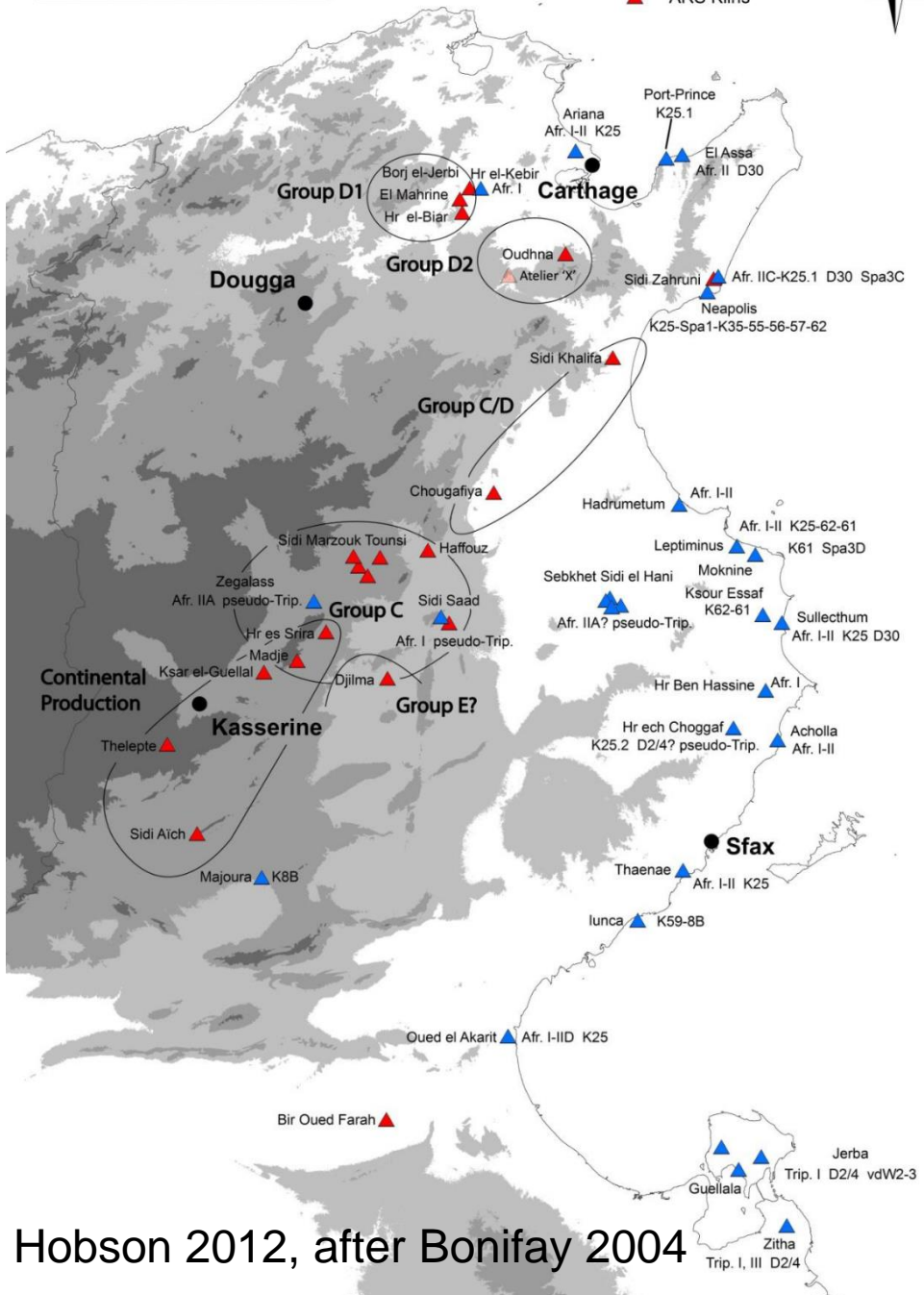
Fig. 5 B. Sito 173.



Fig. 6 B. Sito 527.

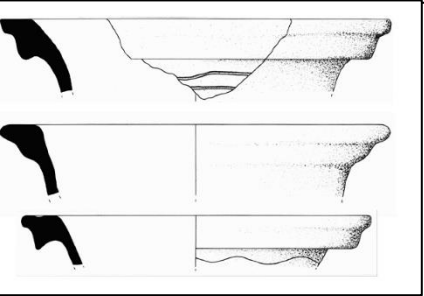
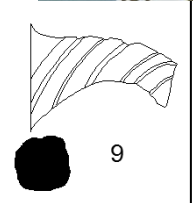
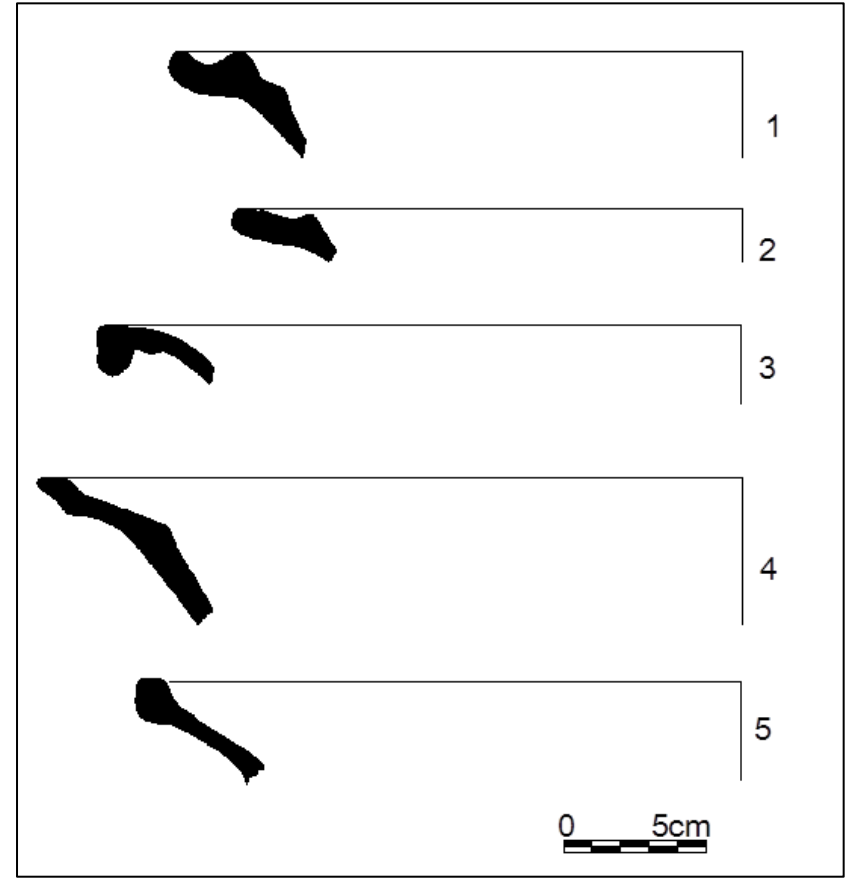
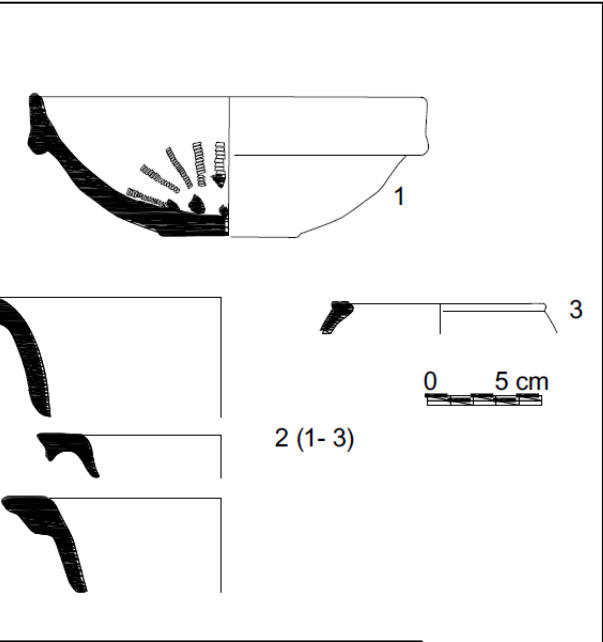
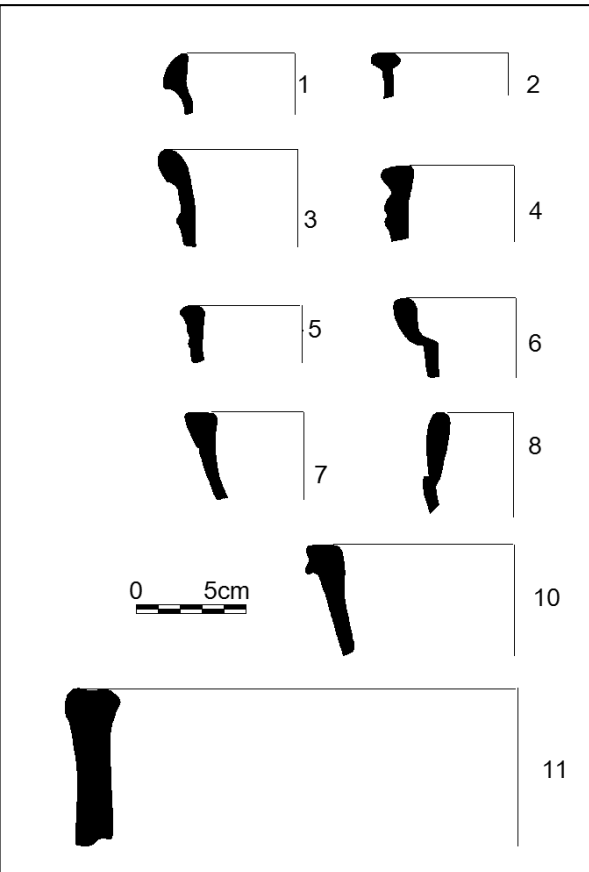


- ▲ Amphora Kilns
- ▲ ARS Kilns



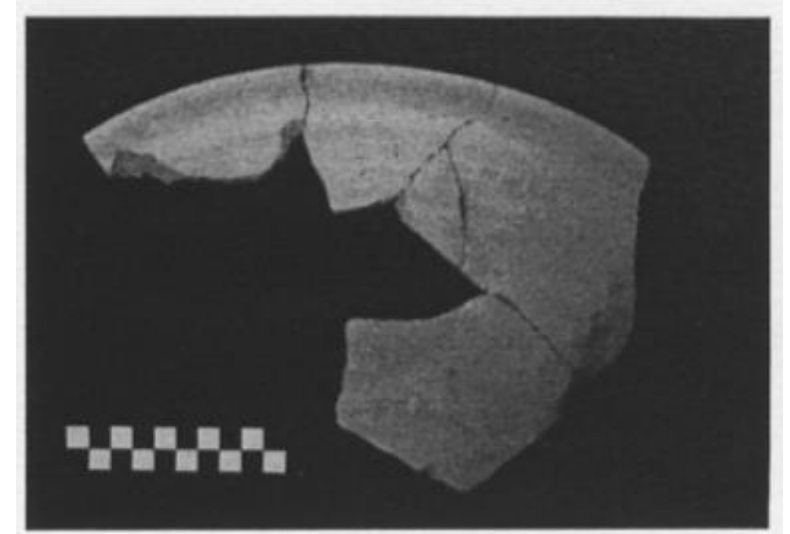
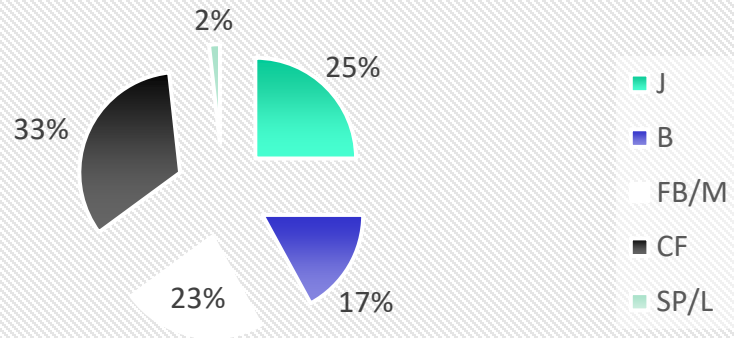
Hobson 2012, after Bonifay 2004

Common Wares



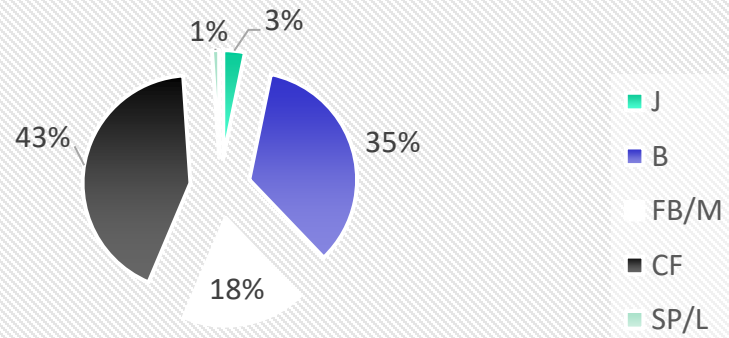
Urban vs rural ceramic supply

Functional Typology of Coarse Ware (Survey)



Early Roman Basin (I-II Jh.), well represented at Carthage, Uzita, Pupput, Leptiminus, Sabratha

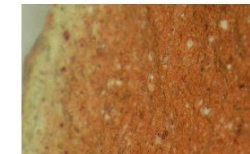
Functional Typology of Coarse Ware (Urban Excav.)



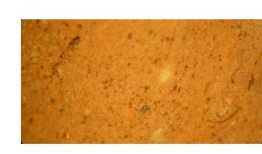
1



2



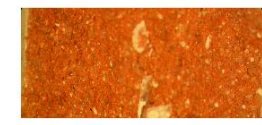
3



4



5



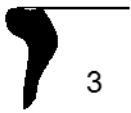
6



1



2



3



4

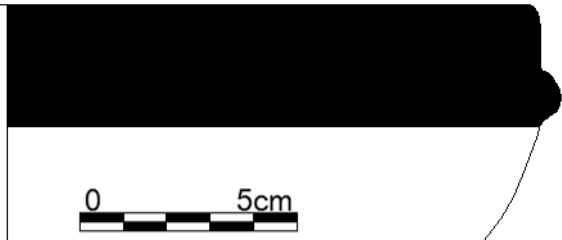
African Cooking Wares



5



192



192

1 cm



192

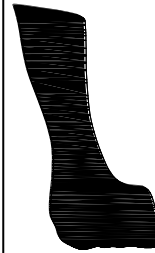
172

309

462

192

Calcitic Ware



3



4



DO 570



171

171

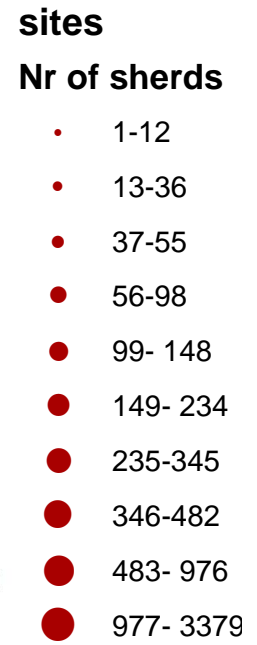
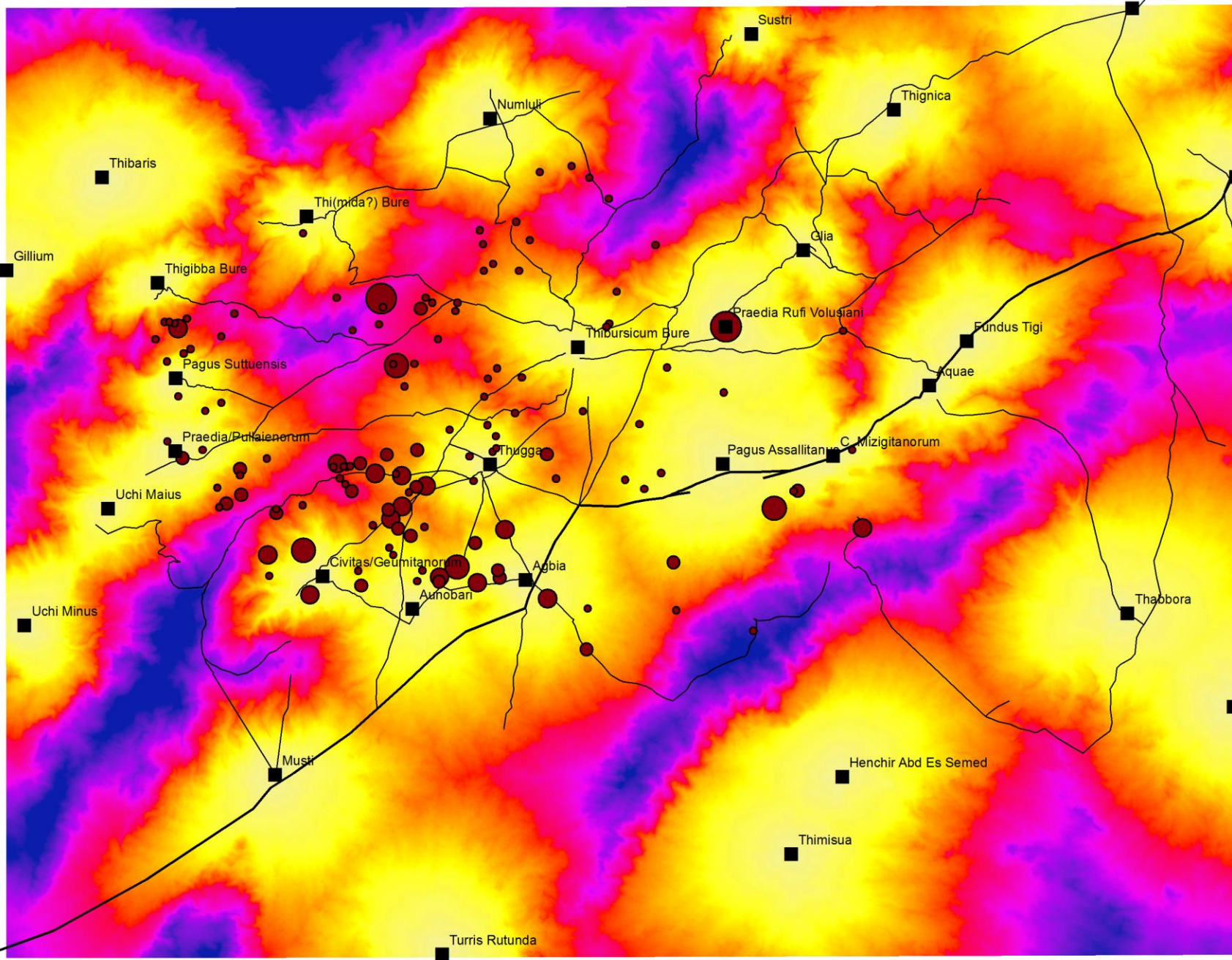
171



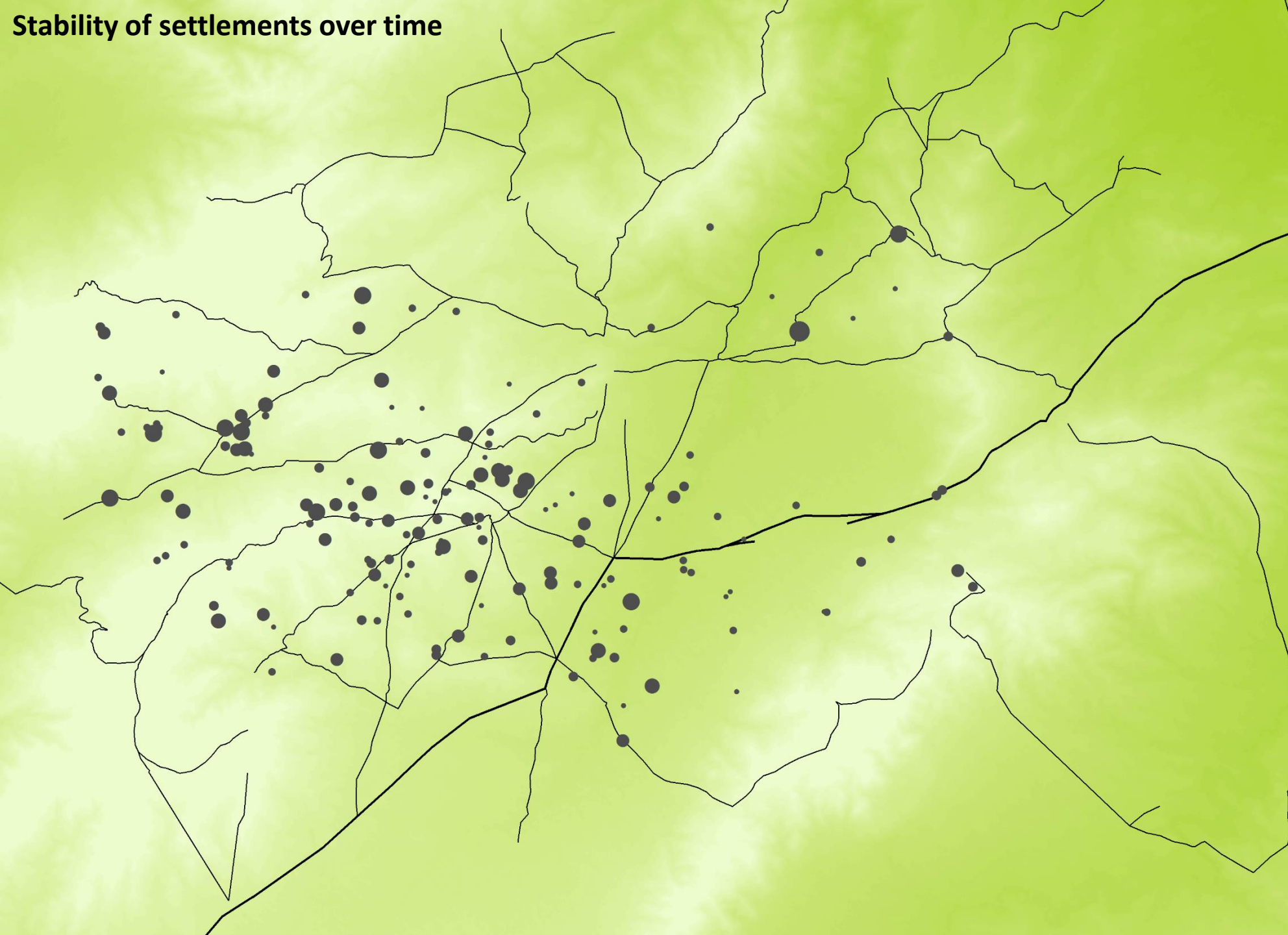
171

172

1 cm



Stability of settlements over time



Nr of phases















- 1
- 2
- 3
- 4
- 5
- 6
- 7

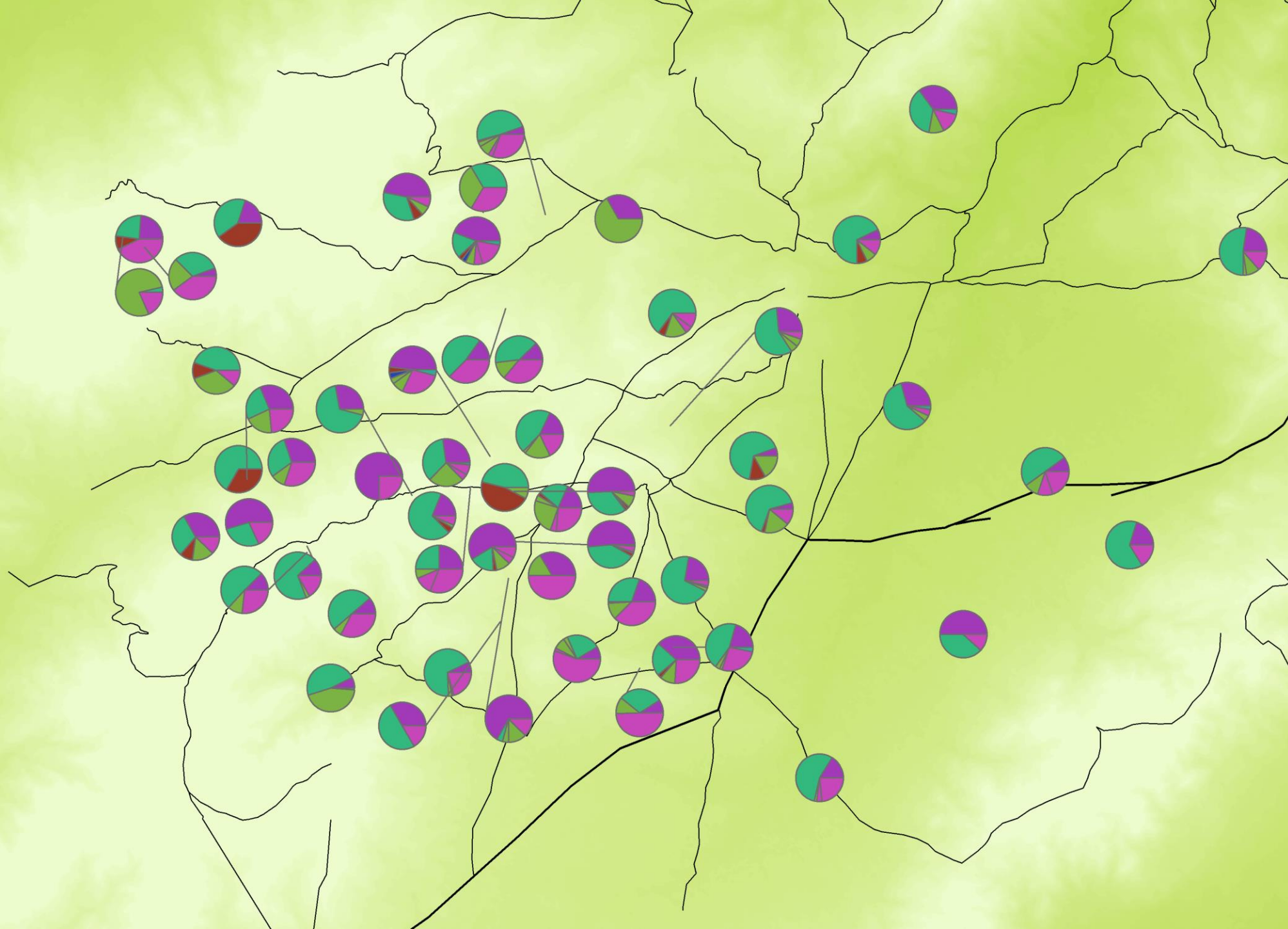
— roads (after Carton)

— Carthage to Theveste



Villages assemblages

- 
-  ARS
-  CW
-  ACW
-  HM
-  BGW
-  IS_
-  GLA
-  CBM_M_OS
-  DW
-  AMPH
-  PW
-  LA
-  TW
- roads (after Carton)
- Carthage to Theveste



Farms assemblages



- ARS
- CW
- ACW
- HM
- BGW
- IS_
- GLA
- CBM_M_OS
- DW
- AMPH
- PW
- LA
- TW

roads (after Carton)

Carthage to Theveste



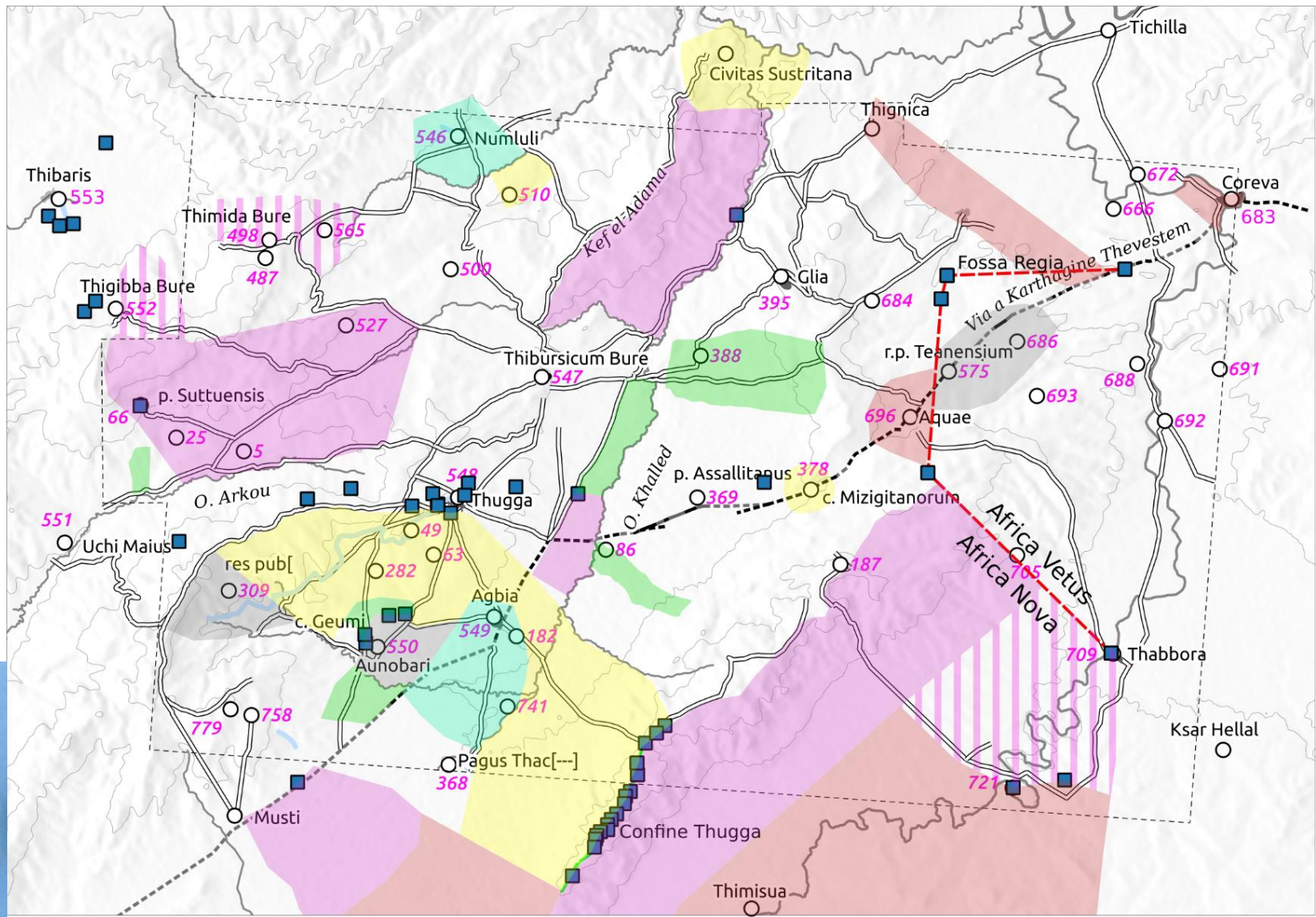
Site 527



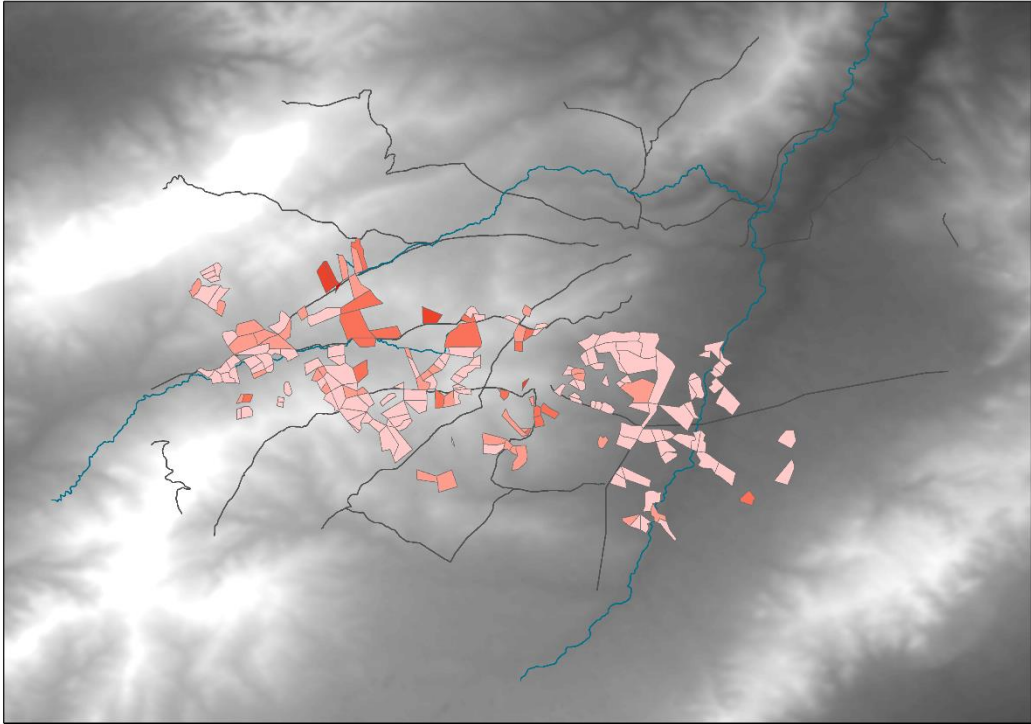
Site 187



Patterns of land property



Map: LASA - UniTn



Mapalia, El Alia (Mahdia, II AD). Prussin, Labelle 1995.